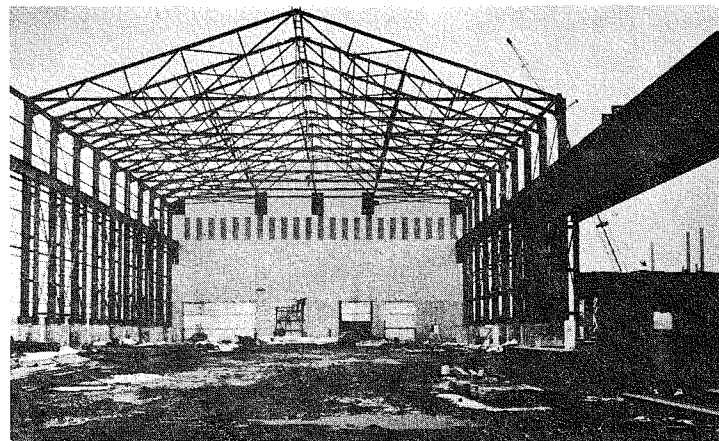
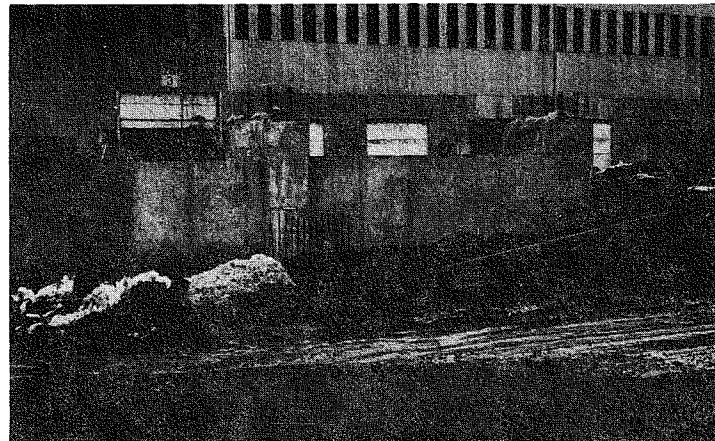


CONSTRUCTION AT THE 14-INCH MILL



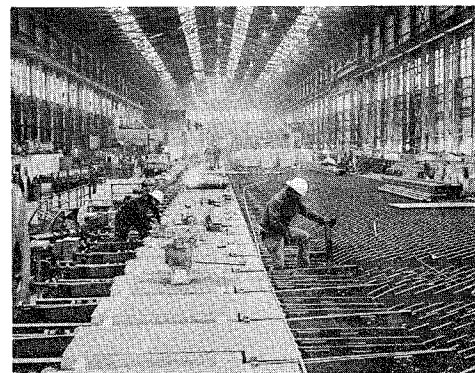
Construction of the addition to the west end of the 14-Inch Mill moved ahead in early March after the slowdown because of January's snows and February's cold weather. In the left photo, sheeting to cover the



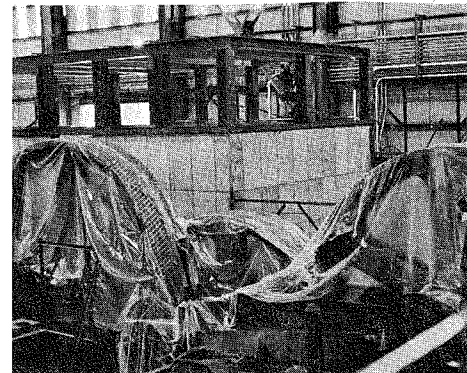
framework seen here was scheduled for early March. The right photo is a closeup of the curtain wall which shows the additional 3½ foot height extension which will aid in flood control.



The construction never stopped inside the 14-Inch Mill where the workers were protected from winter's winds. At the left is a view of the in-line straightener roll-out line excavation. The center photo looks east at the new cooling bed roll-out tables. Work on this phase is nearing



completion. The right photo is a look at the east end of the building and the new roughing mill construction. In the background is the roughing mill motor room, which will house a 4,000 horsepower motor. Some of the gears which will be used are in the foreground of this photo.



THE PERFECT LICENSE PLATE



The license plate that Vernon Schwenk and his wife, Carol, are proudly pointing out does indeed say "NSW 79." Vernon, a Turn Foreman in the Galvanizing Department for the past six years, ordered the plate in September last year. "I'm really proud of that plate, it makes me and my family feel more a part of our Company's centennial." Vernon has been with Northwestern for the past 12½ years and has spent all his time in the Galvanizing Department.

Our "Other" Commemorative Sign

There is another sign commemorating NSW's 100 years of service besides the more well-known sign above the east plant gate. The one shown here sits near the entrance to the west plant, just inside the Central First Aid Complex parking lot. This sign was constructed and installed by Company employees and holds a safety message that will be changed every other month.



Northwestern
SINCE 1879
Sterling

MARCH, 1979

The Lightning Bolt

NORTHWESTERN STEEL AND WIRE COMPANY · STERLING, ILLINOIS 61081

Larry Cramberg, Ron Adams Honored At Hot Rolled Products Sales Meeting

Our Hot Rolled Products Sales team honored two of their hard-working people at the annual Hot Rolled Products Sales Meeting held February 22 and 23.

Larry Cramberg was honored as Salesman of the Year while Ron

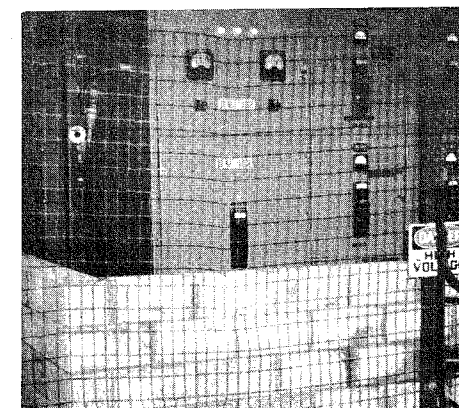
Adams was named Correspondent of the Year at the dinner held at the Rock River Country Club. Each was presented with a plaque in honor of their achievement.

Larry Cramberg, the HR Sales- (Continued on page 2)

WE'RE PREPARED FOR POSSIBLE FLOODING

Be prepared!
That's the official motto of the Boy Scouts of America, but it can—and does—pertain to Northwestern Steel and Wire Company, Too.

Our Company has prepared plans to safeguard our buildings, equipment and production capability from the expected record flooding of the Rock River. (The Army Corps of Engineers, which holds the responsibility for our nation's waterways, has predicted that floods along the Rock could be the (Continued on page 2)



The new electrical substation inside the Wire Mill has been given a protective retaining wall made of cinder block.

Our 100th Anniversary Celebration

There were no formal ceremonies marking our Company's 100th anniversary on Wednesday, February 28, but you can be sure that all our employees and the vast majority of people throughout the Sterling-Rock Falls area knew of the event.

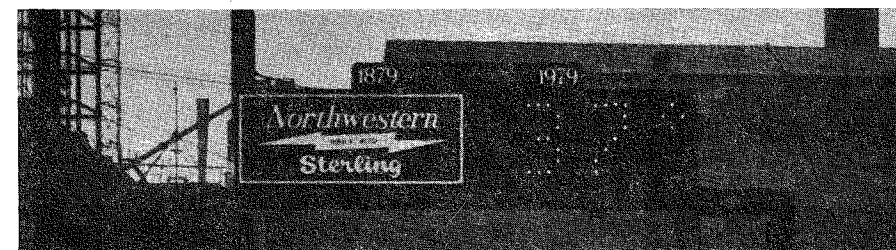
Hundreds of gifts—ranging from floral settings to a time and temperature sign and clock donated by many loyal employees—were delivered to the Company offices. There were so many floral pieces, for example, that they were spread around the Company offices to help bring a little more color throughout the Company.

The Illinois House of Repre-

sentatives adopted a resolution commending Northwestern for "...its irreplaceable contribution to the development of the state of Illinois..." The resolution was introduced into the House by State Representatives Schuneman, Ebbesen and Mautino.

The Sterling-Rock Falls Historical Society held a special March 18 afternoon program honoring the Company. During the ceremonies, the Company was presented with a plaque from the Historical Society, City of Sterling and the Rock Falls Chamber of Commerce. In addition the Daily Gazette also published a special March 15 commemorative edition.

A "TIMELY" GIFT FROM OUR EMPLOYEES



One of the more "timely" centennial celebration gifts given to Northwestern Steel and Wire Company was the time and temperature sign clock shown above. The clock cost \$5,000 and was paid for through the donations of many of our loyal employees, with special assistance from Local 63 of the United Steelworkers. The organizers of the clock's donation drive, who wish to remain anonymous, would like to thank all those who donated towards the employees' gift to the Company. The sign is located above the main gate of the east plant. (See the President's Corner on page two for a related story.)

SPECIAL NOTICE

All employees will have one more chance to purchase the centennial belt buckles and key chains on April 3rd and 4th. The remaining stock of both these items will be sold in the Print Shop between the hours of 2:00 and 4:00 p.m. on both days. These items will not be available at any other time.

The President's Corner



I'd like to dedicate this column to a rather large but still very special group of people—the many hundreds of friends and well-wishers who went out of their way to help Northwestern Steel and Wire Company celebrate 100 years of service to our customers and our community.

As I've said earlier, it's not often that a Company reaches 100 years. It's much rarer than people doing the same thing. But people expect congratulations on birthdays and corporations don't.

That's why it was such a surprise when all those congratulations and gifts started

pouring in as we neared our anniversary last month. It's truly gratifying to learn that your friends and employees think of you on an occasion like this.

I'd like to thank each and every person and group that took the time to offer Northwestern their best wishes and congratulations. Unfortunately, there's not enough space in this newsletter to list all the wonderful mementos, gifts and flowers that were presented to NSW, and it wouldn't be fair to mention just some of the items, without listing them all.

But I will break that rule just this one time to give a special thanks to the many wonderful, loyal employees throughout our plants who "chipped in" to purchase the sign and electric clock now standing proudly above the east plant gate. (There's a photo of it on the front page.)

Once again, to all of you who sent your congratulations, I'd like to say thank you. Your best wishes were deeply appreciated.
W.M. Dillon

TWO HONORED AT SALES MEETING

(Continued from page 1)

man of the Year, has been with Northwestern Steel and Wire since January 9, 1956. His sales territory includes northwest Indiana, northern Illinois and Oklahoma.

Ron Adams, an 18-year NSW



Larry Cramberg (right) received his award as Salesman of the Year from Hot Rolled Products Sales Director C.H. Biermann.

veteran, has been with the Sales Department since 1965.

C.H. Biermann, Hot Rolled Products Director of Sales, and V.L. Johnson, Manager of Sales, presented the honors and addressed the group.



C.H. Bierman (right) presents the Company's award for Inside Correspondent of the Year to Ron Adams (left).

CLEANING UP THE STEEL AT OUR CONDITIONING YARD

Good, clean, blemish-free steel from the primary mills—the 46-Inch and the 25-Inch Mills—is necessary for getting a quality finished product from the 20-Inch or 24-Inch Mills.

That's one reason the job of the people in our Conditioning Yard is so important. They're the ones who

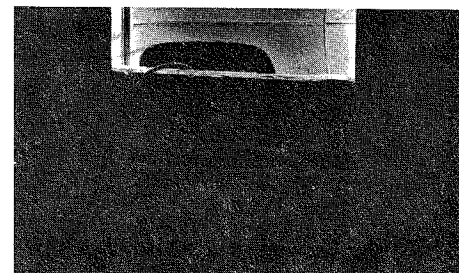
We're Prepared

(Continued from page 1)

worst in 200 years because of the past winter's record snowfall. The Company is working with the Corps of Engineers to minimize the possible damage.)

As of early March, NSW filled over 14,000 sandbags for use around doorways, sewers (where water may "boil" up to the level of the river) and various weak spots (sand boils) in the ground itself near the river.

Besides the sandbags, the weld shop has been busy building box levees to keep the water out of



Non-essential doorways in the 14-Inch Mill have been temporarily bricked up to waist high to prevent possible entry of flood waters.

needed production areas.

NSW also has added two to three feet of concrete to the top of the retaining wall along the river from the east flume to Avenue G and concrete curtain walls have been poured to help prevent possible damage. Open doorways also have been partially bricked (to about waist high) to prevent flood waters from reaching into the buildings or any sensitive equipment inside the buildings themselves.

Box levees and sandbags were stacked where they might be needed, including the Furnace Department where box levees will be placed across the main tracks leading to the charging bays if necessary.

inspect the semi-finished steel before it goes into the finishing mills.

"If we don't take all visible defects out of the steel, any imperfections in the bar or slab will expand along with the rest of the bar or slab," explained Jim Mangan, Superintendent of the 20-24 Inch Conditioning Yard.

Of course, there's more to the job than that. The Conditioning Yard is also responsible for providing the proper steel for the finished product.

The entire job involves bringing the steel from the primary mills to the Conditioning Yard docks and then identifying the semi-finished steel according to its grade, heat number, length and size. Then the steel is inspected. If there are imperfections in the steel, the Scarfers take the defect out by running their acetylene scarfing torches over the blemish. This process is called scarfing.

Once the blemishes are out, the steel bars or slabs are then cupped and wedged (formed into a sort of point) on the ends for easier entry into the mill's roughing stand.

The Scarfer Helpers mark the semi-finished steel and the Crane Operators take over, moving the steel either into piles for future use in the mills or directly into the furnace charging areas for im-



Sam Amasquita, Turn Foreman (right), and Gene Simmons, Stocker, are shown checking the size of the slab to make sure it's in section.

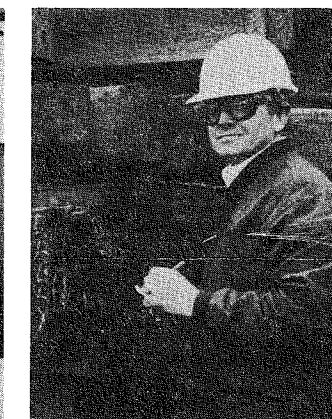


Kenneth Kennedy, Scarfer Helper, is shown identifying the semi-finished slabs just before they are scarfed in the left photo. Center, Keith Kendall is one of the Scarfers at the yard who clean up the imperfections in the slabs before they are taken to the 20-24 Inch Mills. At the right, Scarfer Ted Hardt is shown "cupping" the semi-finished slab so it passes through the rollers of a roughing mill more easily.

mediate use, as directed by the Stockers. The Stockers are responsible for keeping all the steel straight and getting the right steel to the 20-Inch or 24-Inch Mill.

Actually, the 20-24 Inch Conditioning Yard is three separate yards—two are 80 feet wide while the third is 120 feet wide. Because of the constant production at both the 20-Inch and the 24-Inch Mills, the Conditioning Yard is run on four shifts, 24 hours a day.

At the far right, Jim Mangan, Superintendent of the Conditioning Yard, checks slabs as they come off the railroad cars from the 46-Inch Mill to ensure he is getting the proper grade and size steel needed by the finishing mills. Howland Ellis (left) is the Clerk for the Conditioning yard.



Best Retirement Wishes

Our very best wishes for a long and happy retirement go to the following Northwestern Steel and Wire Company personnel who closed out their careers of service on March 1, 1979:

John H. Lehr, 10-Inch Mill, 33 years.

George W. Elgin, Electro-Weld, 31 years.

Ralph F. Near, Mobile Equip-

ment, 24 years.
Leo B. Cox, Barb Wire, 16 years.

NEW ASSIGNMENTS

Our best wishes go to the following Company employees who have been given new assignments as of mid-March:

James Gallentine was appointed Plant 1 Pipe Shop Foreman.

Tony Lopez was named Pit Foreman in the Electrical Furnace Department.